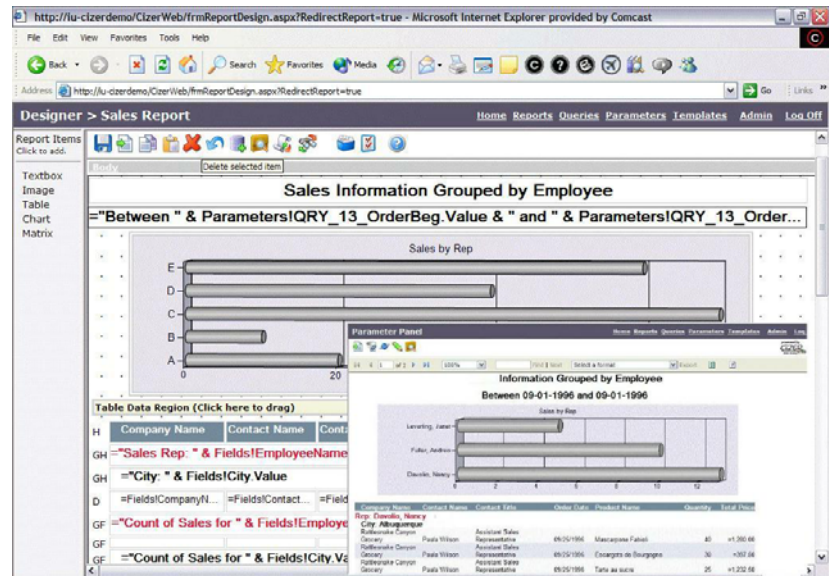


**Cizer.Net Report Builder:** Traditional report builder that uses browser-based wizards and libraries of standard SQL.

- Internet Explorer client with **zero** download files
- Available for SQL Server 2000 or 2005
- Supports SQL Server Standard or Enterprise edition
- Wizard-oriented approach to report creation
- Reports based on reusable queries stored within the Cizer Library
- Reports use parameters defined and stored within the Cizer Library
- Drilldown based on data returned by SQL queries used within the report
- Supports any OLE-DB data source
- Reports can make use of multiple data sources via SQL queries included in the report
- Report queries are defined in Query Builder or in any query tool using SQL knowledge
- Supports both Windows and non-Windows network environments
- Supports both Windows authenticated and un-named Internet users
- Cizer.Net Reporting includes both Report Builder for production-style reports and Quick Query for ad hoc reporting.
- Comes in Standard or Enterprise Edition and supports multi-level admin, hierarchical security and dynamic data sources



**Microsoft Report Builder:** Complex report builder that uses sophisticated Microsoft-defined data-model and dynamic data navigation.

- .Net Smart client with download files
- Reports only against SQL Server and Oracle data (Oracle data connect requires SP2)
- Dynamic data-navigation approach to report creation
- Reports based on MS Report Model stored within MS Report Server
- Reports include parameters defined privately within the report
- Drilldown based on MS Report Model including all related data entities
- Reports can only use MS Report Model as data source
- MS Report Model can only be built on SQL Server data sources
- Reports can only use a single MS Report Model data source
- MS Report Model definition requires knowledge of MS Report Model builder in VS.NET
- Supports Windows network environments
- Supports Windows authenticated users

